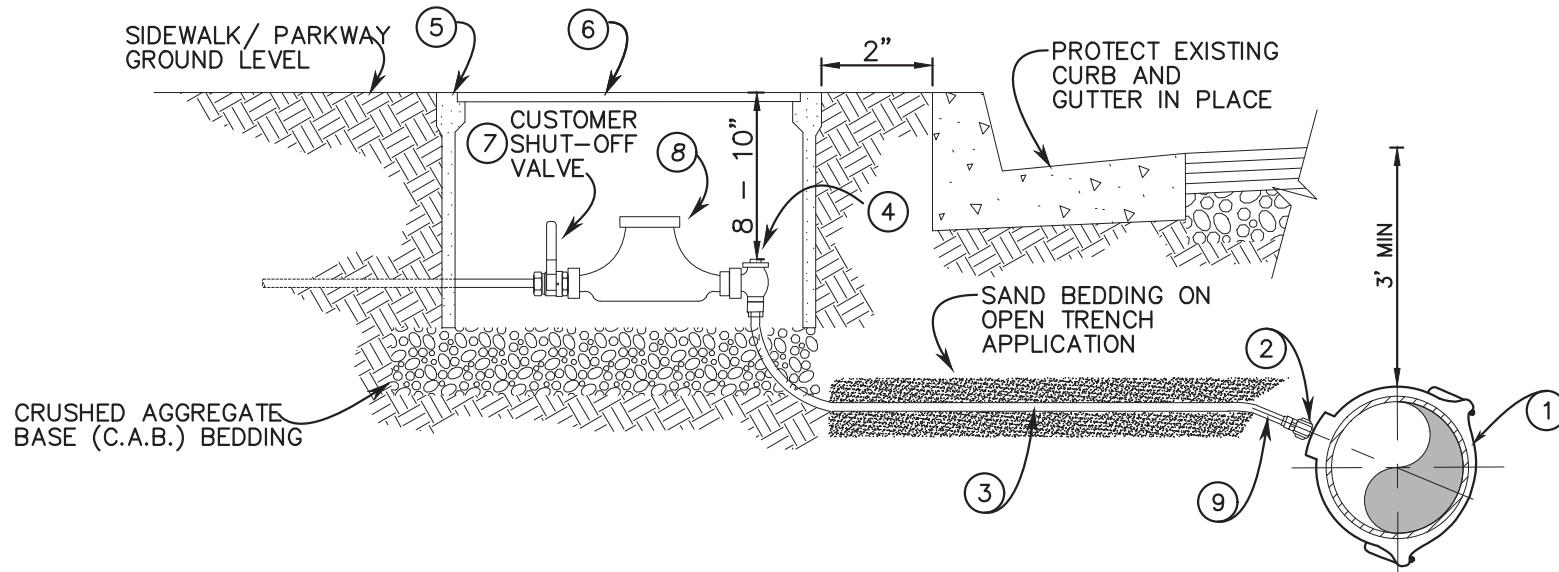


NOT TO SCALE




CONSTRUCTION NOTES:

1. SERVICE SADDLE SHALL NOT BE INSTALLED WITHIN 24" OF VALVE, COUPLING, JOINT OR FITTING. TAPPED COUPLINGS ARE NOT PERMITTED.
2. INSTALL CORPORATION STOP IN OPEN POSITION.
3. THE WATER SERVICE SHALL EXTEND PERPENDICULAR TO THE CENTERLINE OF THE STREET FROM THE WATERMAIN TO THE ANGLE STOP.
4. METER BOXES SHALL BE SET 2" FROM THE BACK OF CURB
5. EACH METER SHALL HAVE A CUSTOMER SHUT OFF VALVE.
6. METER BOX, LID AND COVER SHALL BE FURNISHED BY CONTRACTOR.
7. INSTALL #12 GAUGE TRACER WIRE ALONG WITH ALL PEX TUBING.

MATERIALS

ITEM NO.	SIZE & DESCRIPTION	MANUFACTURER	SPEC NO.
①	DOUBLE STRAP BRONZE SERVICE SADDLE 1" M.I.P. OUTLET	JONES MUELLER	J-979 BR2B
②	1" BRONZE CORPORATION VALVE BALL TYPE M.I.P. x C.T.S.	JONES MUELLER	E-1935SG EQUAL
③	1" "BLUE" PEX TUBING	MUNICIPEX	SDR9 (CTS)
④	1" ANGLE METER VALVE CTS X METER SWIVEL	JONES MUELLER	E-1963WSG EQUAL
⑤	METER BOX	ARMORCAST	A6001946PC12
⑥	METER COVER & DROP IN LID	ARMORCAST	A6001866DW & A6000481D
⑦	CUSTOMER BALL SHUT-OFF VALVE METER-SWIVEL X F.I.P.	JONES MUELLER	E-1908W EQUAL
⑧	WATER METER (SIZE VARIES)	SUPPLIED BY DISTRICT	
⑨	1" CTS PIPE INSERT	JONES MUELLER	J-2808 M528705

1-INCH WATER SERVICE

APPROVED BY:  
  
 5/10/21  
 DATE  
 ROY FRAUSTO  
 GENERAL MANAGER



DRAWING #  
**W-1**  
 REVISION DATE:  
 MAY  
 2021

LA PUENTE VALLEY  
 COUNTY WATER DISTRICT

1" WATER  
 SERVICE DETAIL