

| ITEM NO. | MATERIALS |
|----------|-----------|
|----------|-----------|

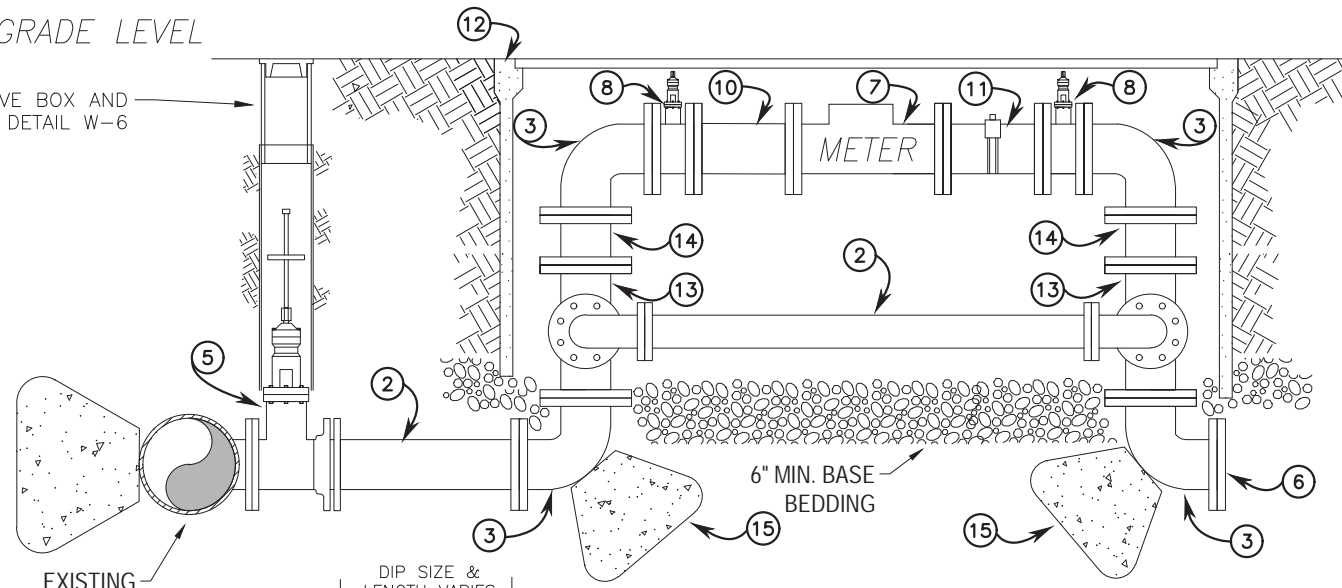
- |   |  |
|---|--|
| ① | TRANSITION COUPLING  |
| ② | CLASS 350 DIP (LENGTH VARIES)                              |
| ③ | 90 FLG X FLG BEND  |
| ④ | TEE FLG X MJ   |
| ⑤ | FLG X MJ GATE VALVE  |
| ⑥ | BLIND FLANGE   |
| ⑦ | OCTAVE METER   |
| ⑧ | FLG X FLG GATE VALVE                                       |
| ⑨ | 90 FLG DIP BENDS   |
| ⑩ | 2X DIAMETER SIZE SPOOL                                     |
| ⑪ | 2X DIAMETER SIZE SPOOL W/<br>2" SERVICE SADDLE             |
| ⑫ | ARMORCAST POLYMER CONCRETE<br>VAULT W/TORSION ASSIST COVER |
| ⑬ | TEE FLG X FLG  |
| ⑭ | SPOOL FLG X FLG  |
| ⑮ | THRUST BLOCK (SIZE VARIES)                                 |

HEIGHT VARIES

WIDTH VARIES

GRADE LEVEL

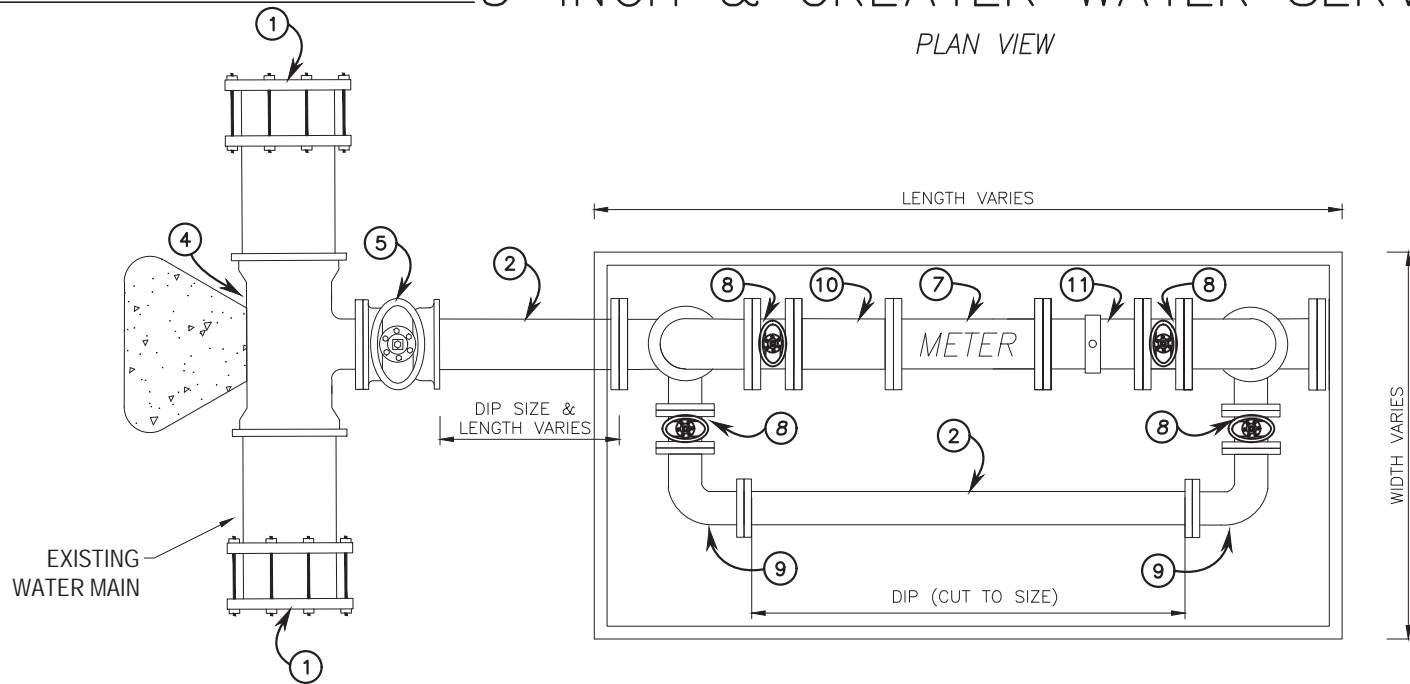
SEE VALVE BOX AND COVER DETAIL W-6



SECTION VIEW

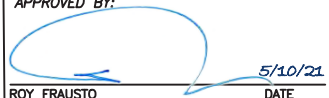
## 3-INCH & GREATER WATER SERVICE

PLAN VIEW



### CONSTRUCTION NOTES:

1. TEE CUT IN SHALL NOT BE INSTALLED WITHIN 24" OF VALVE, COUPLING, JOINT OR FITTING.
2. THE WATER SERVICE SHALL EXTEND PERPENDICULAR TO THE CENTERLINE UNLESS OFFSETS ARE REQUIRED.
3. ALL VAULTS SHALL BE ORDERED SPECIFIC TO ACCOMMODATE JOB SPECIFIC INSTALLATION CONSTRAINTS. ALL VAULTS WILL BE EQUIPPED WITH TORSION ASSIST LIDS.
4. ALL COMMERCIAL, INDUSTRIAL AND IRRIGATION METER SERVICES WILL REQUIRE A DISTRICT APPROVED BACKFLOW PROTECTION DEVICE.
5. BUTTERFLY VALVES CAN BE USED AS AN OPTION WHEN DEPTH IS A CONSTRAINT.
6. EXPOSED PIPING WITHIN THE VAULT SHALL BE CEMENT MORTAR LINED AND EPOXY COATED.

APPROVED BY:  
  
 ROY FRAUSTO  
 GENERAL MANAGER  
 5/10/21  
 DATE



DRAWING #  
 W-9  
 REVISION DATE  
 MAY 2021

LA PUENTE VALLEY  
 COUNTY WATER DISTRICT

3-INCH AND GREATER  
 SERVICE DETAIL